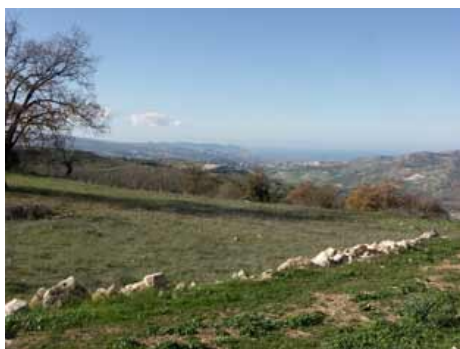




**€150,000**

**Lasa: Ref. LAS555**

With a tranquil location, this picturesque plot of 7,693m<sup>2</sup> is partly level, partly sloping and has many beautiful, mature oak trees in situ. Situated on the outskirts of the traditional village of Lasa, it has stunning views of Polis Chrysochous Bay and Paphos forest. It has a 10% build factor and there is direct access.



# PARKER BARNES

With a tranquil location, this picturesque plot of 7,693m<sup>2</sup> is partly level, partly sloping and has many beautiful, mature oak trees in situ. Situated on the outskirts of the traditional village of Lasa, it has stunning views of Polis Chrysochous Bay and Paphos forest. It has a 10% build factor and there is direct access.

The picturesque, traditional, rural village of Lasa is approximately a 25 minute drive from Polis and the coast. Situated at around 600 metres above sea level, it has stunning views of Chrysochous Bay and its narrow, winding roads are lined with traditional stone houses.



00 357 26 323 976

[www.parkerbarnes.com](http://www.parkerbarnes.com)

[info@parkerbarnes.com](mailto:info@parkerbarnes.com)